

## DRAGA 3500 JET SUCTION DREDGER



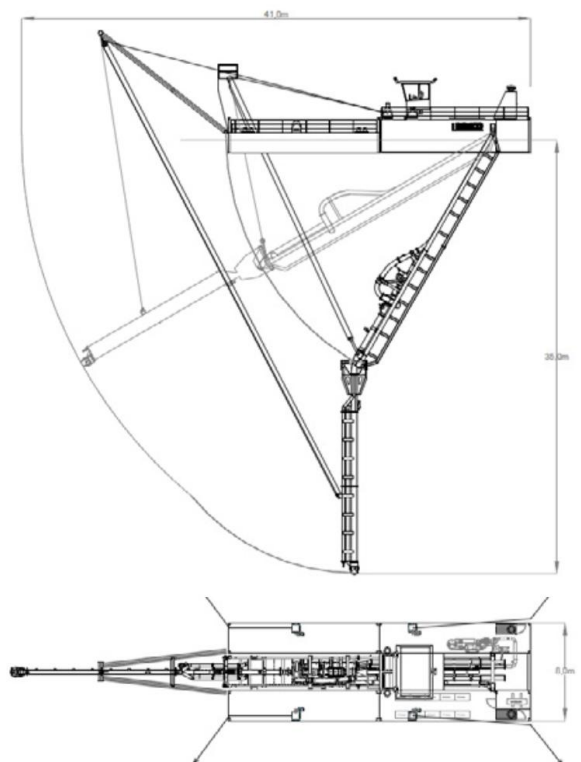
### INNOVATIVE – SUSTAINABLE – ROBUST

—— **Electric-driven dredge pump:** lowest cost per cubic meter. No emissions and minimal noise pollution.

—— In-house **iPump®** line: developed through sixty years of experience in sand and gravel extraction. Wear-resistant for increased lifespan, optimal suction characteristics, adaptable for a wide range of tasks.

—— In-house **iDredge® control and automation system:** ensuring increased efficiency and reduced power consumption. Optional: remote-controlled dredge systems and data collection for automated performance analyses.

—— **Modular construction** for low-cost transportation worldwide and inland delivery to remote locations. Relocation facilitated through the iPlug-and-Dredge Concept. The modular design ensures industry-leading delivery times and continuous **availability of spare parts.**



# DRAGA 3500 JET SUCTION DREDGER

## TECHNICAL SPECIFICATIONS

### FEATURES

- Transportable in eight shipping containers
- Efficient Electric Drive System
- Small Environmental Footprint
- Low Noise & Vibration Level
- One-man Operation

### DREDGING FEATURES

Max. Dredging Depth:	35	[m]
Nominal Mixture Flow:	2000 – 4000	[m <sup>3</sup> /h]
Available Suction Diameter:	400 – 500	[mm]
Available Discharge Diameter:	350 – 450	[mm]
Available Dredge Pump Sizes:	350 / 400 / 450	[mm]
Min. Spherical Pump Passage:	180	[mm]

### DREDGE PUMP DRIVE

Power Source:	Electric feed cable
System:	Submersible Motor
Available Dredge Pump Power:	500 / 600 / 750 [kW]

### JET PUMP

Jet Pump Flow:	400 / 600	[m <sup>3</sup> /h]
Jet Pump Pressure:	9 / 16	[bar]
No. Jet Nozzles:	8	[pcs]

### PRINCIPAL DIMENSIONS

Length o.a. with raised ladder:	41	[m]
Length over pontoons:	24	[m]
Width:	8	[m]
Depth:	2.8 / 1.8	[m]
Draught:	1	[m]
Main Pontoons LxWxH:	12 x 2.5 x 2.8	[m]
Front Pontoons LxWxH:	12 x 2.5 x 1.8	[m]
Total dry weight:	115	[ton]
Air draught:	8.8	[m]

### ELECTRIC INSTALLATION

Primary Voltage:	6 - 20	[kV]
Secondary Voltage (3-Phase):	400 / 480	[Vac]
Dredge Pump Power Source:	VFD	
Jet Pump Power Source:	VFD	
Mooring Winches:	DOL starter / VFD	

### DECK INSTALLATION

Ladder Hoisting Winch (Electric):	60	[kN]
Suction Tube Hoisting Winch (Electric):	40	[kN]
Mooring Winches (Electric):	30 / 50	[kN]
Mooring Winch Wire Capacity:	200	[m]

### DECK CRANE

Lifting Capacity:	30 / 40	[kN]
Outreach:	2.5	[m]

### TOOLS

- Special tools are supplied for maintenance of dredge pump

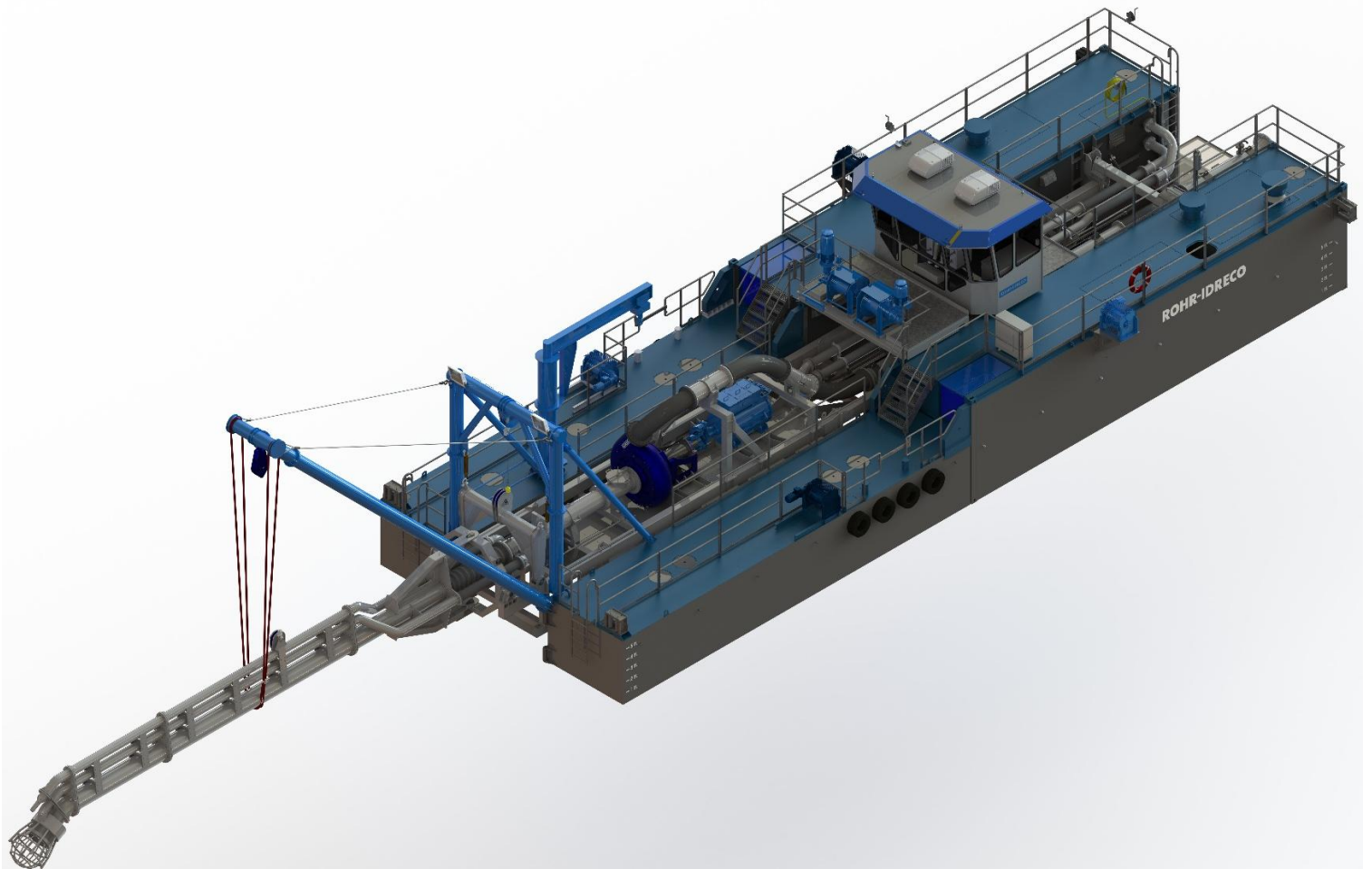
### INSTRUMENTATION

- **iDredge®** Dredger Control System
- Dredging Depth indication
- Vacuum and Pressure Indication of Dredge Dump

### OPTIONAL EQUIPMENT

- DGPS Dredge Mining Control System
- Production Measurement
- Discharge Velocity Measurement
- Additional Hydraulic Excavation Head
- Second jet pump for high pressure jetting
- Floating discharge pipeline
- Floating high voltage supply cable
- Remote dredge monitoring

## DRAGA 3500 JET SUCTION DREDGER



# ROHR-IDRECO



## **ROHR-IDRECO**

Innovatieweg 40-07,  
7007 CD Doetinchem,  
The Netherlands

+31 314 66 70 01  
sales@rohr-idreco.com  
www.rohr-idreco.com